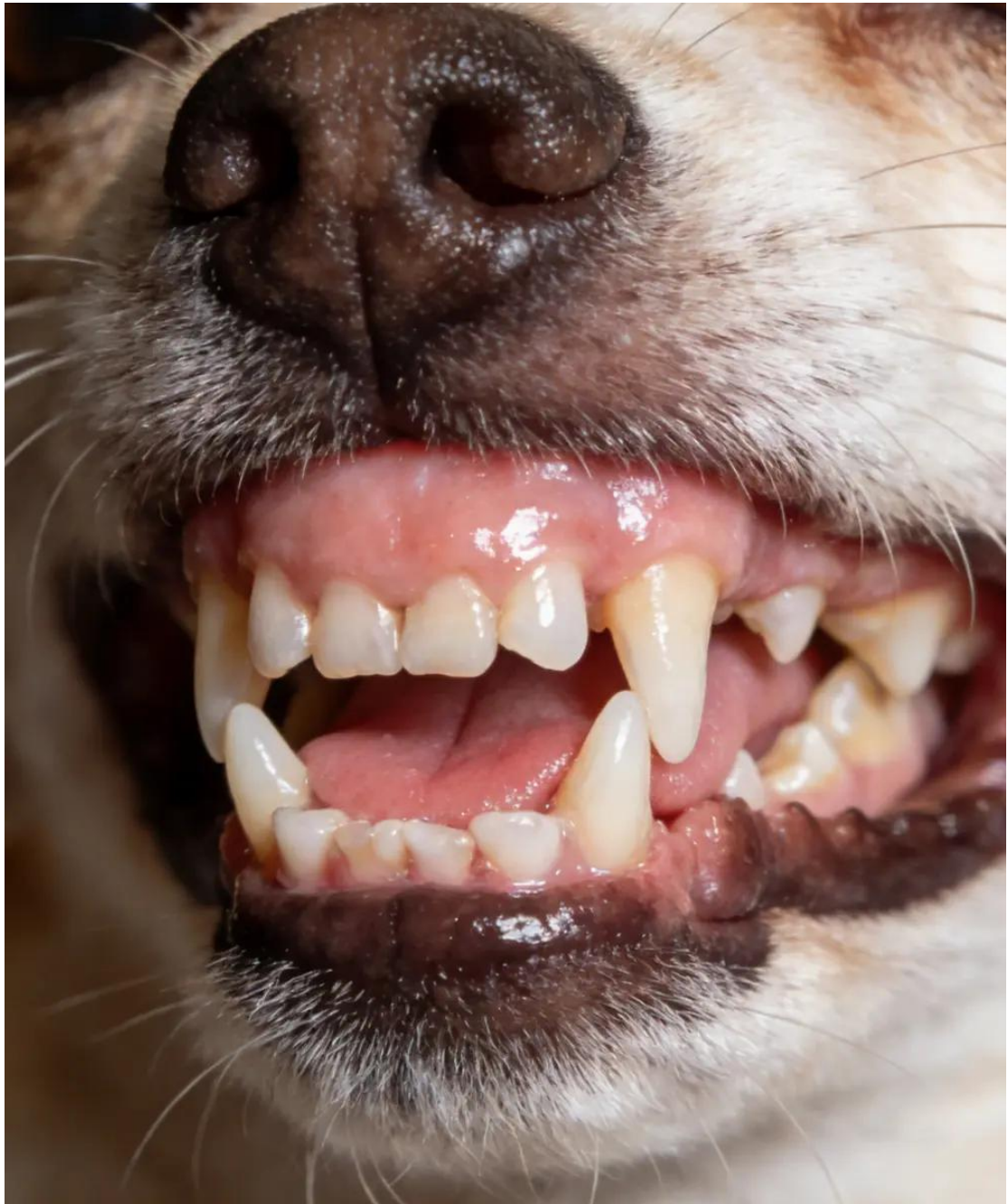


Small Dog Dental Crisis: 5 Expert Tips to Stop Rapid Tooth Loss

It's a heartbreaking reality: by the age of two, nearly 90% of toy breeds are already battling the early stages of periodontal disease. This Small Dog Dental Crisis isn't just about bad breath; it's a silent threat that causes tiny companions to lose their teeth five times faster than larger breeds.

To combat this, owners must look beyond basic grooming. [Integrating Practical Instructions On How To Take Care Of A Dog For A Happy Life](#) into your daily routine is the only way to prevent systemic infections that could eventually damage your dog's heart and kidneys.



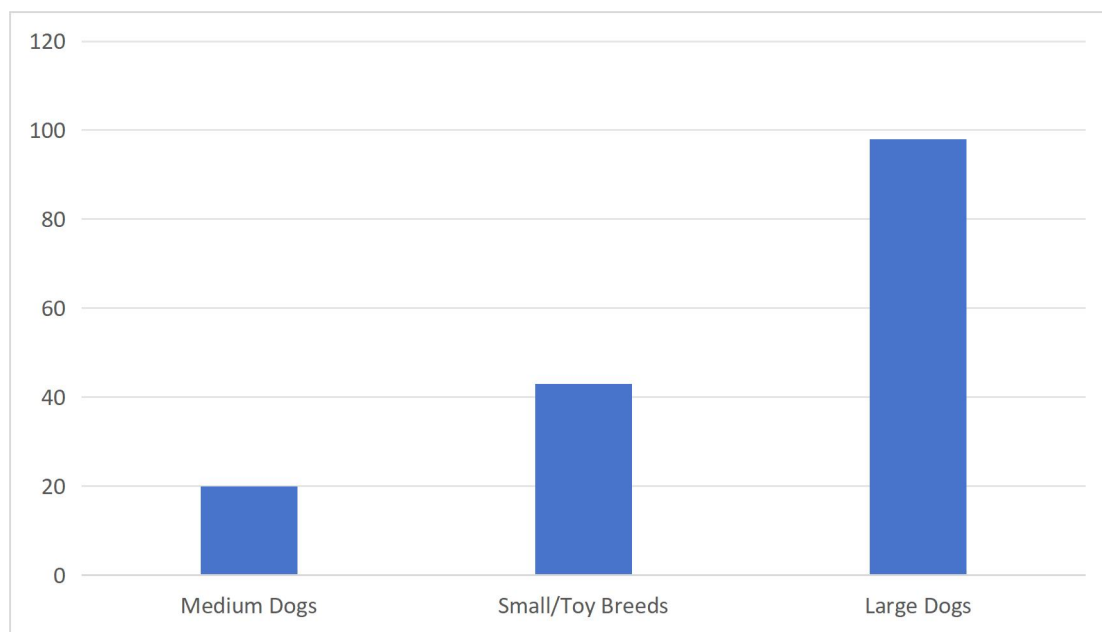


Crowded teeth in small breeds create “bacterial hotels” where tartar thrives.

Why “Small Mouths” Trigger a Dental Crisis

The Small Dog Dental Crisis stems from a simple biological conflict: a Chihuahua and a Great Dane both have 42 adult teeth. However, the Chihuahua’s jaw is a fraction of the size. This extreme crowding means food debris has nowhere to go but into the microscopic gaps between overlapping teeth.

Plaque Accumulation Index (Small vs. Large)



5 Tips to Navigate the Small Dog Dental Crisis

1. Precise “Crowded Space” Brushing

Standard brushes are useless in a toy breed’s mouth. To address the Small Dog Dental Crisis, you need a 360-degree micro-head brush. Focus 100% of your effort on the upper back molars, as these are the first to decay in crowded mouths.

2. The Chemistry of Enzymatic Cleaning

When physical brushing can’t reach every gap, enzymes must take over. Using an enzymatic toothpaste is one of the most effective Practical Instructions On How To Take Care Of A Dog For A Happy Life. These enzymes continue to dissolve biofilm long after you stop scrubbing.





Pro Tip: Small dogs are highly scent-driven. Use poultry or beef-flavored gels to turn a stressful medical chore into a rewarding “snack time.”

3. Density-Matched VOHC Chews

Not all chews are safe. In the context of the Small Dog Dental Crisis, a chew that is too hard can cause “slab fractures.” Always look for the VOHC Seal and ensure the density is appropriate for

your dog's jaw strength.

4. Sterilize the Biofilm Source

Biofilm accumulates on water bowls within 24 hours. For a dog already prone to oral bacteria, a dirty bowl is a constant source of re-infection. Following Practical Instructions On How To Take Care Of A Dog For A Happy Life includes sterilizing these bowls daily to keep the mouth's microbial load low.

5. Professional Baseline X-Rays

The Small Dog Dental Crisis often hides beneath the gum line. Annual professional cleanings with dental X-rays are non-negotiable for small breeds, as they allow vets to spot bone loss before a tooth falls out.

Hygiene Method	Crisis Prevention Power	Best For...
Micro-Brushing	95%	Preventing molar decay.
VOHC Chews	40%	General surface maintenance.
Water Additives	15%	Reducing daily bacterial count.

Consistency Saves Smiles

Resolving the Small Dog Dental Crisis doesn't require a miracle—it requires 30 seconds of your time every night. By prioritizing oral health, you are directly extending your dog's life and preventing years of hidden pain.

Remember, a healthy mouth is just one pillar of holistic pet care. For a complete guide on mental and physical wellness, refer to our [Practical Instructions On How To Take Care Of A Dog For A Happy Life](#).

Start tonight. Lift their lip and look. Your awareness is their strongest defense.

Learn more at <https://dogmentalhealth.com>